



## OMAN, THE "BLUE CITY" RESORT RESIDENTIAL BUILDINGS & VILLAS

CONSTRUCTION: AECO Development LLC

STRUCTURAL DESIGN: OMAN 2007 JV, KANON CONSULTING, (2007-2010)



*Al Madina A' Zarqa, Oman, Master Plan-Aerial View - (Foster & Partners)*

The Blue City Resort Project is aiming in creating a completely new resort city of an estimated future population of 250.000 inhabitants in the location Al Madina A'Zarqa, 80 km north of Muscat in the sultanate of Oman.

According to the master plan design developed by Foster & Partners, during the first phase of the project the necessary infrastructure works and some residential and commercial areas will be completed. These include neighbourhoods with villas and apartment buildings, shopping centers and a five star hotel.

The masterplan is comprised of a series of clustered communities with private courtyards and narrow, winding streets serviced by an efficient transport and road network extending across the site. There will be schools, a university, stadia, golf facilities, a concert hall, marina, hotels, health facilities, souks, as well as further retail and amenities serving the individual communities.

"Kanon Consulting" is a member of a Joint Venture formed by several consulting offices of various disciplines to undertake the design of various neighborhoods. The J/V has been assigned to perform the design of four neighborhoods with villas and apartment buildings of the new city, namely section 9.2, 9.3, 7.5 and 10.2. Construction works are currently suspended due to financial difficulties.

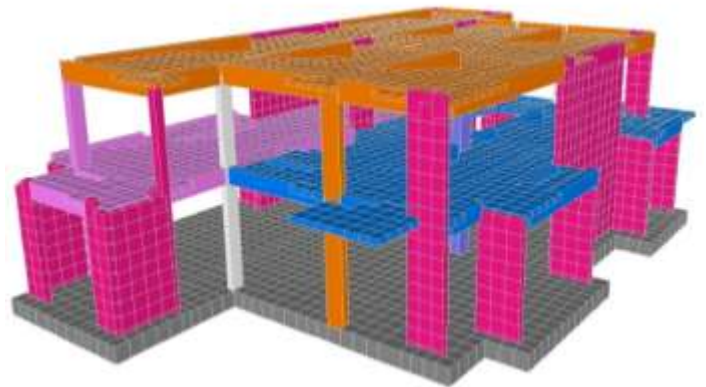


*Visualization of "Blue City" at the final stages of development*

## RESIDENTIAL BUILDINGS & VILLAS



*Plot 7.5 comprised of more than 200 villas*



*Typical Villa in plot 7.5 and its respective structural model*



*Villas under construction. Concrete works have been completed*

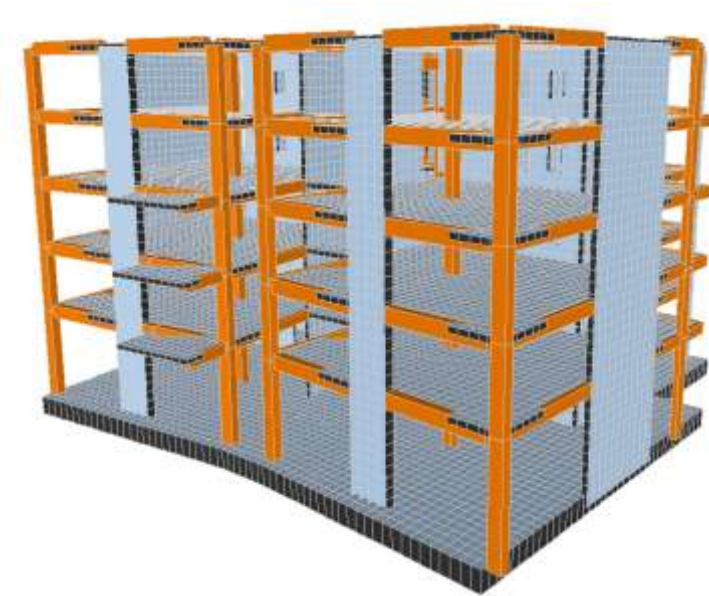
### **Sections 7.5, 10.2**

Each of these sections consists of two clusters of villas. There are five different types of villas in these sections, which by repetition and various combination arrangements form the two clusters mentioned above.





*Architectural Visualization of an apartment building neighbourhood*



**Sections 9.2, 9.3**

Each of these sections consists of clusters of apartment blocks. There are up to 22 variations of apartment buildings, depending on the number of units and their layout. The plots also include a club house, a retail building, a swimming pool and a circular Gazebo.

*SAP 2000 Structural Model of a typical apartment building*



*Apartment Buildings under construction*